

INSTALLATION INSTRUCTIONS

Ford Explorer with lift platform

TruckVault Inc
 (800) 967-8107
 www.truckvault.com

TRUCK VAULT**Tools Required:**

Short Phillips screwdriver
 9/16 wrench/socket

Materials Included:

TruckVault Lift Installation Instructions
 4 - 3-Prong knobs

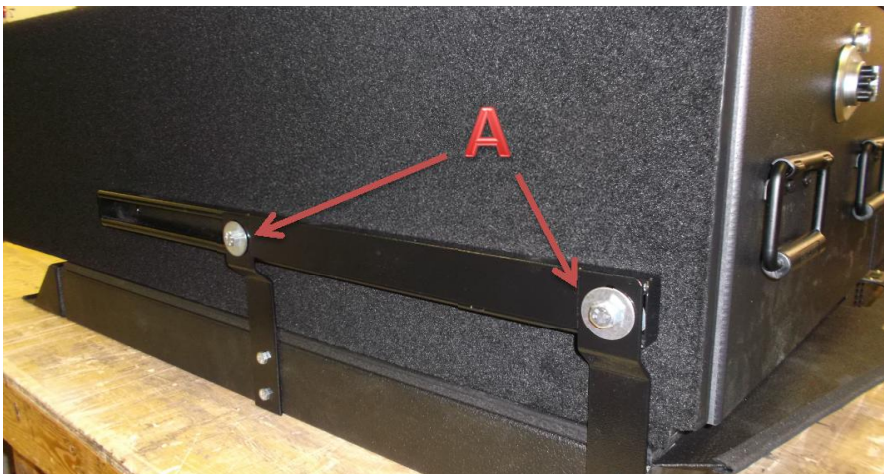
Personnel Required: Two (2) people

Congratulations! You now own the finest secure vehicle storage system on today's market. Enjoy the confidence you'll experience when traveling with your valuables safely locked in your TruckVault.

- 1 Open the TruckVault drawers just far enough to reach in and unscrew the rubber stoppers attached to the underside of the top. Now completely remove the drawers and set aside. To remove drawers with slides, pull out far enough to expose the black slide locks on each side. Lift up on the slide locks and pull the drawer completely out.



- 2 Locate and remove the track bolts (A) on the side of the Vault.



- 3 Remove TruckVault from lift platform, and set aside
- 4 Install the lift platform in the vehicle using the attached TruckVault Lift Installation Instructions.
- 5 Reinstall TruckVault onto lift platform, install supplied 3-Prong knobs (B) through the side brackets where bolts (A) were previously removed. Leave the knobs slightly loose.
- 6 Slide the TruckVault back towards the front of the vehicle along the track. Tighten the 4 hand knobs (B).
- 7 Reinstall the drawer by reversing the procedure in step 1.

To operate the Lift platform in need of spare tire access, follow the following steps:

- 1 Remove heavy objects from inside of Vault. Close and latch the drawers.
- 2 Loosen the 4 track knobs (B) along the side of the vault.
- 3 Grab onto drawer handles and slide vault out towards the rear of the vehicle. Vault must be slid all the way out on the track to be able to lift.
- 4 Re-tighten the 4 knobs (B) on the side of the Vault.
- 5 Lift the TruckVault upward, to expose the Spare tire area.
- 6 Reverse previous steps to reinstall TruckVault.

Congratulations! You now own the finest secure cargo storage system on the market. Enjoy the confidence you'll experience when traveling with your valuables safely locked in your TruckVault.

Installation Instructions:

TRUCKVAULT LIFT - EXPLORER INTERCEPTOR

Note: Vehicle must be pursuit with no 3rd row seat.

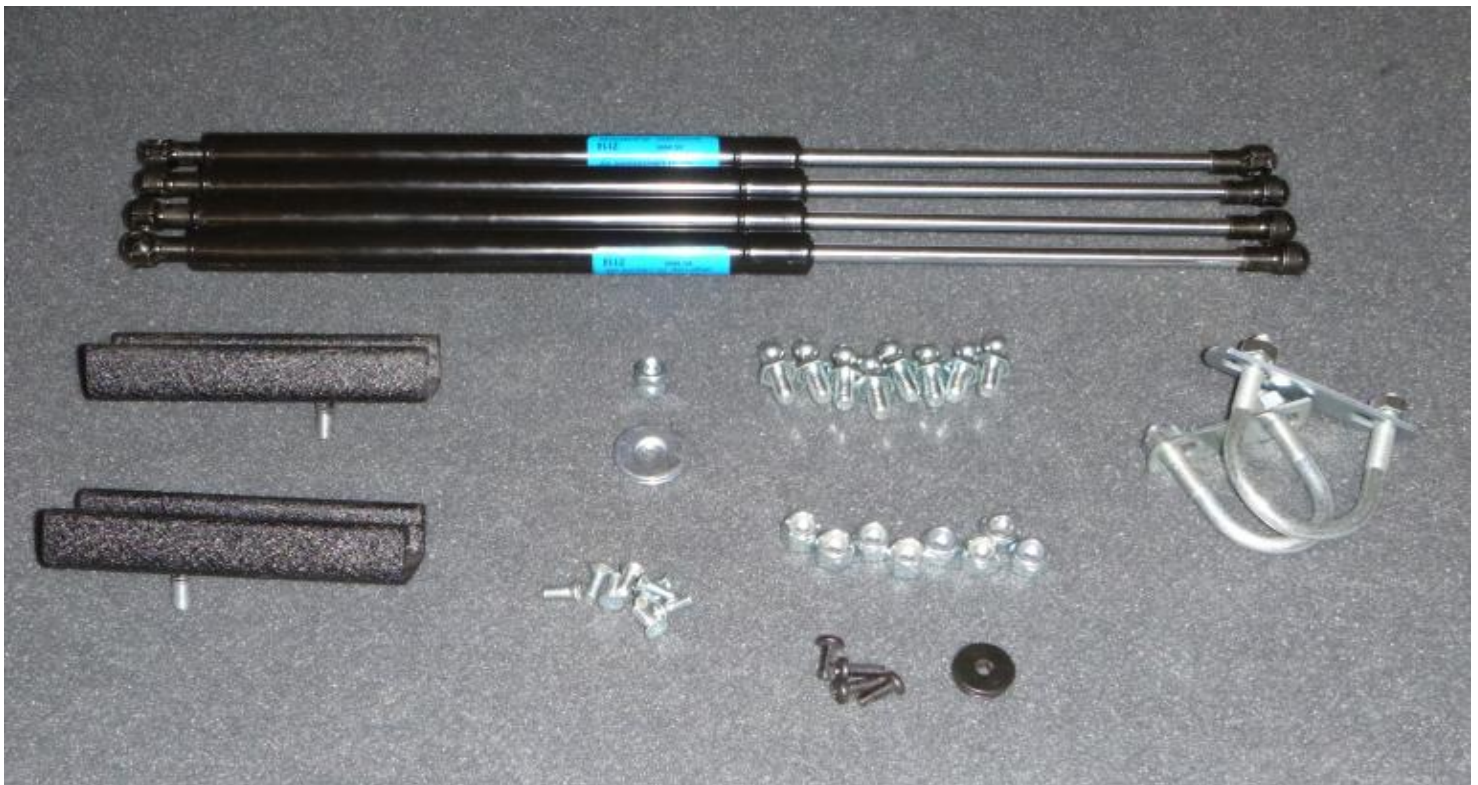
Tools Required:

Phillips screw driver
10mm socket
6mm allen wrench
1/2" wrench/socket
9/16" wrench/socket
3/4" wrench/socket

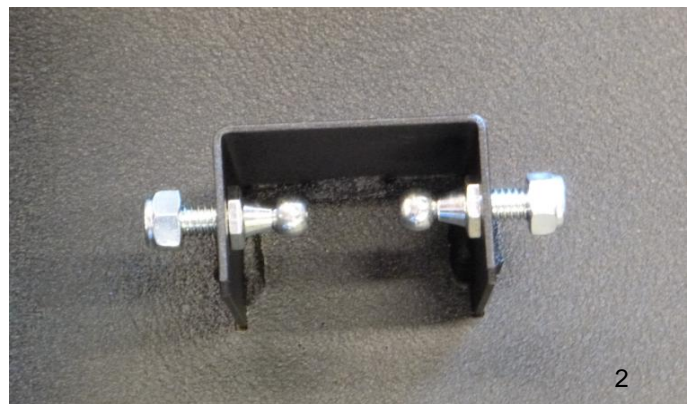
Materials Included:

2 - Lift arm mount 400.1000.00B
2 - 1/4" nuts
2 - 1/4" washers
2 - U brackets
4 - 90lb gas struts
8 - Ball studs
8 - 5/16 nuts
1 - ABS trim panel
4 - 3/16 x 3/4" black washer
4 - 10-32 x 1/2" pan head machine screw black

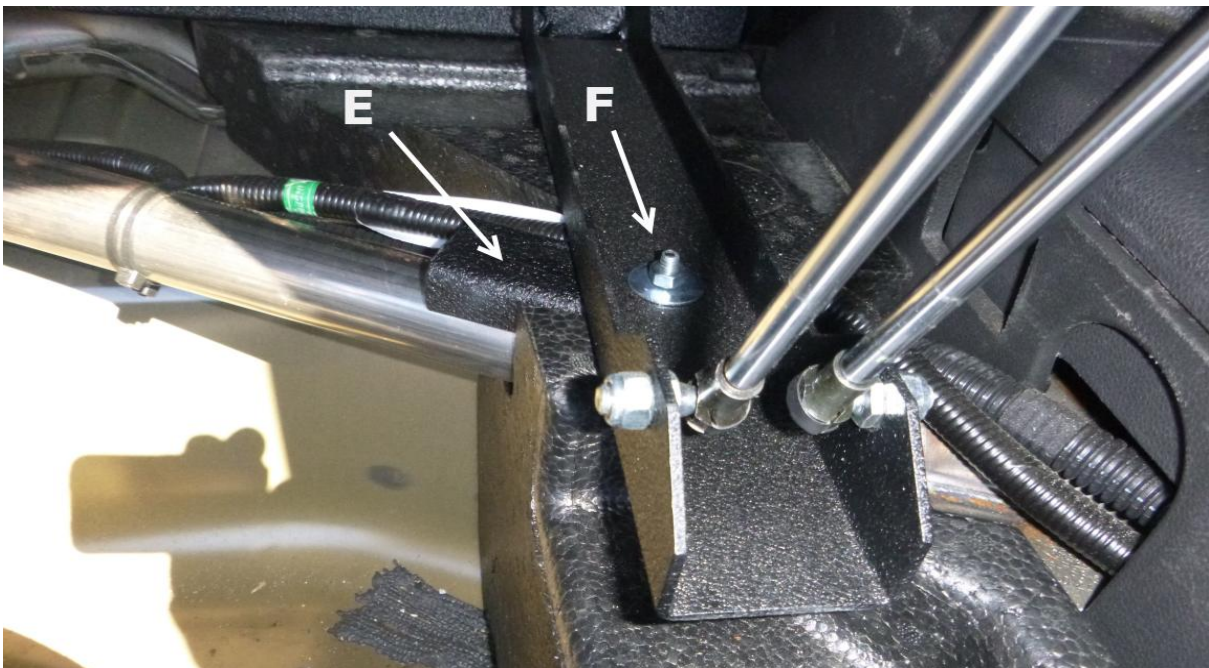
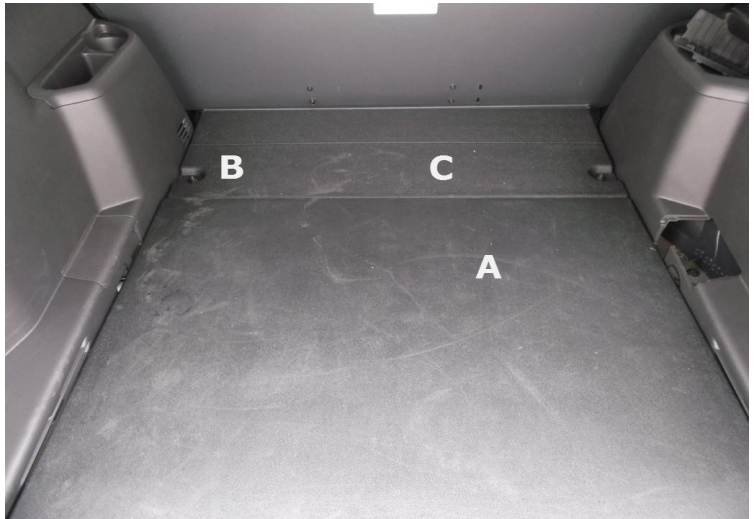
Personnel Required: Two (2)



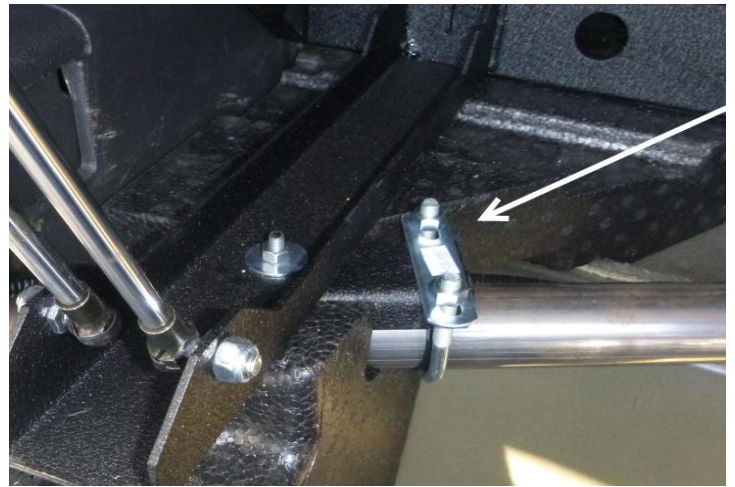
1 Turn the lift deck upside down and install the 8 Ball studs onto the bottom of the lift deck and the lift arms. **NOTE: The ball ends point towards each other.**



- 2 Remove the spare tire cover (A)
- 3 Remove the 2 factory bolts & sleeves (B) from the electrical access panel with the 10mm socket.
- 4 Remove the electrical access cover (C). Save the cover for when the lift is no longer needed.
- 5 Slide the TruckVault lift into the cargo area of the vehicle. Align the two through holes on the back of the lift with the studs in the floor (D). (Note: Do not remove the factory nuts on these studs, this is for alignment only.)
- 6 Using the factory bolts (B) & sleeves, attach the back of the TruckVault lift to the floor of the vehicle. Keep bolts loose until front mounting supports are installed.
- 7 Install the (2) lift arm mounts (E) on top of the vehicle frame support as shown. The longer leg of the supports go towards the middle of the vehicle. Lift the TruckVault lift legs, slide the supports underneath, and lower lift legs to align with the stud.
- 8 Secure the lift arm to the supports with supplied 1/4" washer and 1/4-20 nut (F).



- 9 Attach the U-bracket to the vehicle support and the lift arm supports. Be careful to not pinch any wiring that runs along the vehicle support.
- 10 Tighten all bolts & nuts so the lift is secured to the vehicle.
- 11 With the help of another person, open the lift deck and install the 8 Ball studs onto the bottom of the lift deck and the lift arms. NOTE: The ball ends point towards each other.
- 12 Press the gas struts onto the ball studs as shown. The chrome portion of the struts point downward.



- 13 Attach the rear trim panel with the 4 supplied machine screws. NOTE: You may cut the ABS trim panel in any configuration to accommodate radio & electronic equipment.

