

SETTING/CHANGING YOUR COMBINATION

STEP 1. Open Drawer - Remove allen screw from the left side of the lock.

STEP 2. Clear the lock - Turn outside thumb knob to the left to clear the lock.

STEP 3. Enter existing combo.

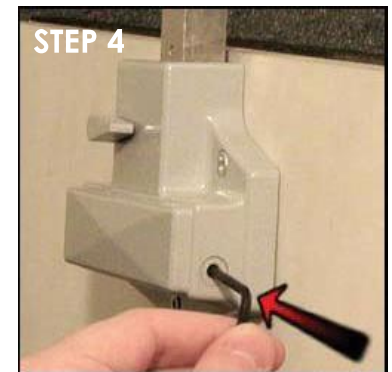
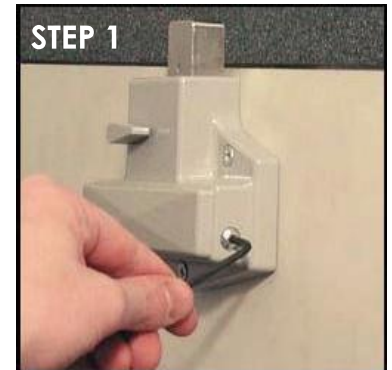
STEP 4. Insert allen wrench into the hole on the left side of the lock to depress internal lockout slide.

STEP 5. Turn thumb knob back to the left.

STEP 6. Enter new combo.

STEP 7. Turn thumb knob to the right.

STEP 8. Repeat steps 5-6.

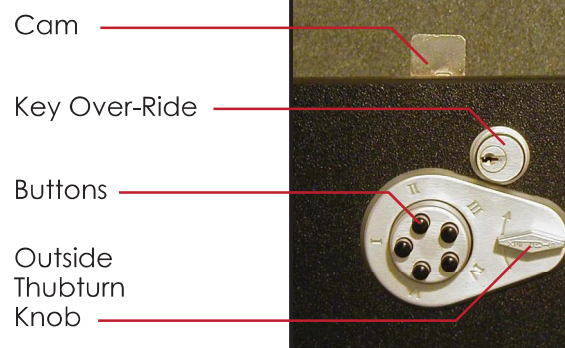


WARRANTY INFORMATION

This product is warranted to be free from defects in material and workmanship under normal use and service for a period of one (1) year. However, this warranty does not cover problems arising out of improper installation or use. Our only liability, whether in tort or in contract, under this warranty is to repair or replace products which are returned to the factory, shipping charges prepaid to the address shown within the one (1) year warranty period.

Our warranty shall only apply if the item returned is found by analysis by factory personnel to be defective.

This warranty is in lieu of and not in addition to any other warranty or condition, express or implied, including without limitation merchantability, fitness for purpose or absence of latent defects.



Troubleshooting

If the thumb knob retracts the cam and you have not entered your comb, steps were done out of order and the lock is in zero code. **Repeat steps 2-4-5-6-7&8.**