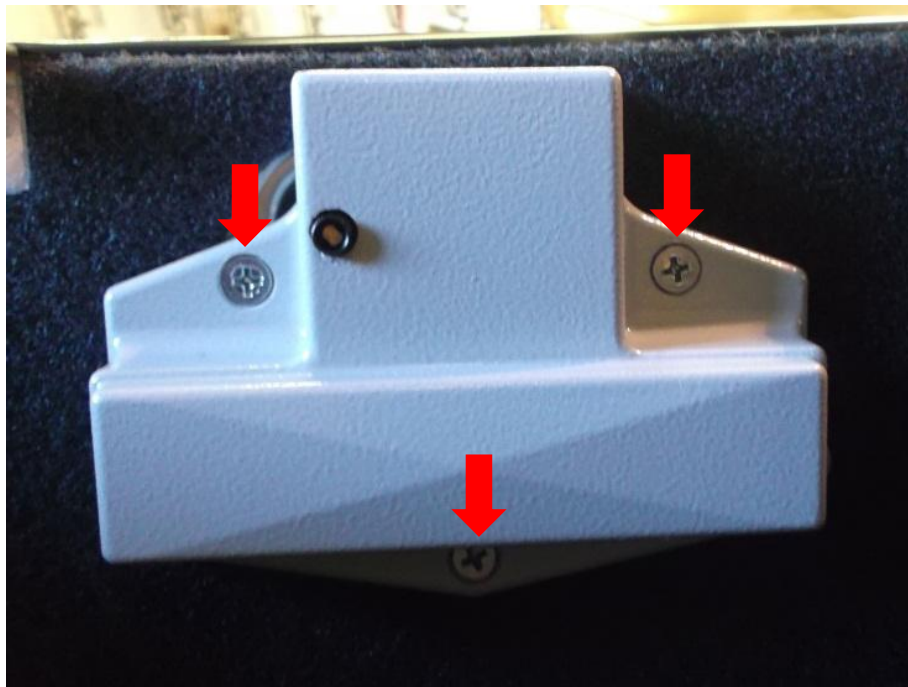




Resetting An Unknown Combination On Your Kaba Simplex Pushbutton Lock

These instructions should help you reset the combination of your TruckVault Kaba Simplex Push Button Lock without having the previous combination.

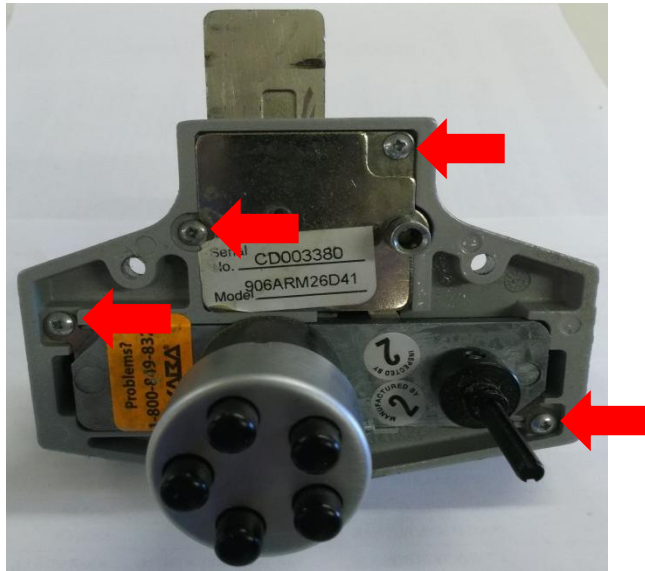
Tools required: A small and medium Phillips screwdriver and a small, flat tip screwdriver.



Begin by removing the lock assembly from the drawer front of your TruckVault. It is secured by three Phillips screws into the back of the drawer face. Access these three screws from the inside of the drawer.

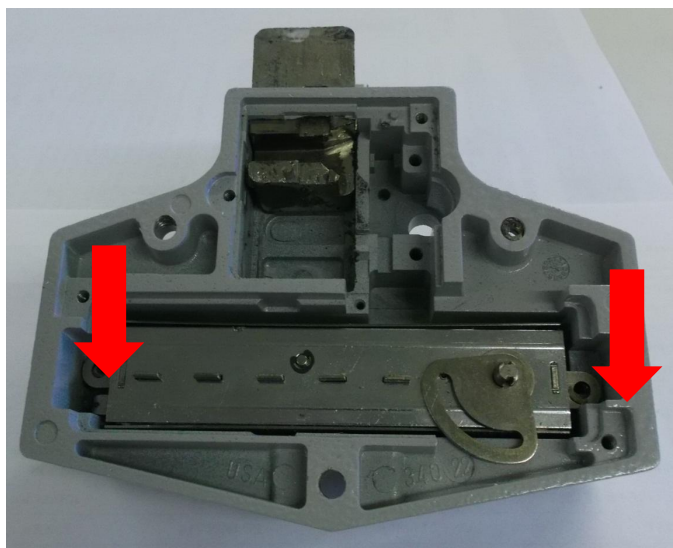
TRUCK VAULT

SECURE STORAGE SOLUTIONS®



You will then need to remove the button assembly and gear plate from the lock assembly. (Four Screws)

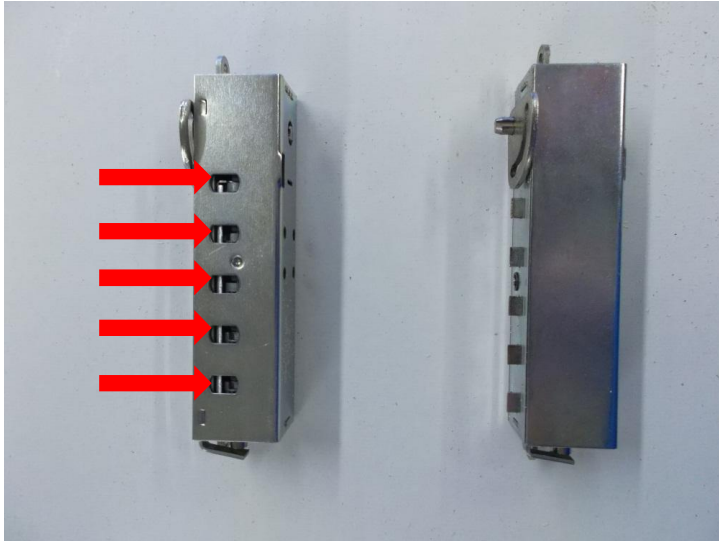
*** Be careful when you remove the gear plate that the bolt does not travel up any farther than it is in the locked position. If you need to, lock the assembly and wrap tape around it – there are small parts that can be lost if the bolt is allowed to move beyond this position.



Remove the tumbler assembly. (Two Screws.)

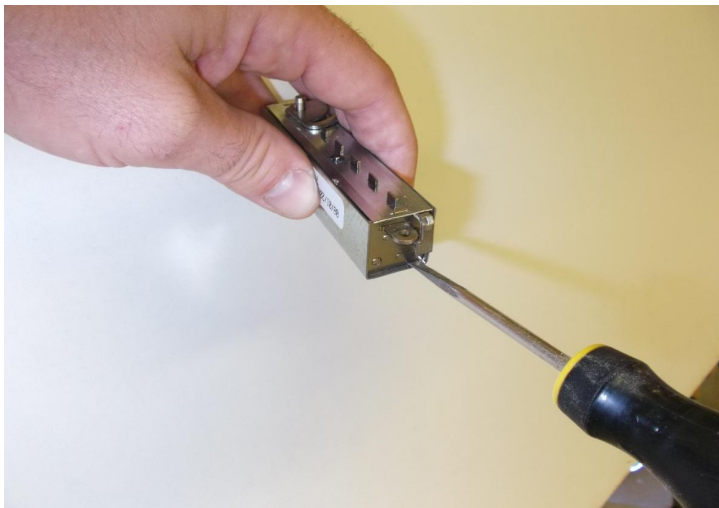
TRUCK VAULT

SECURE STORAGE SOLUTIONS®



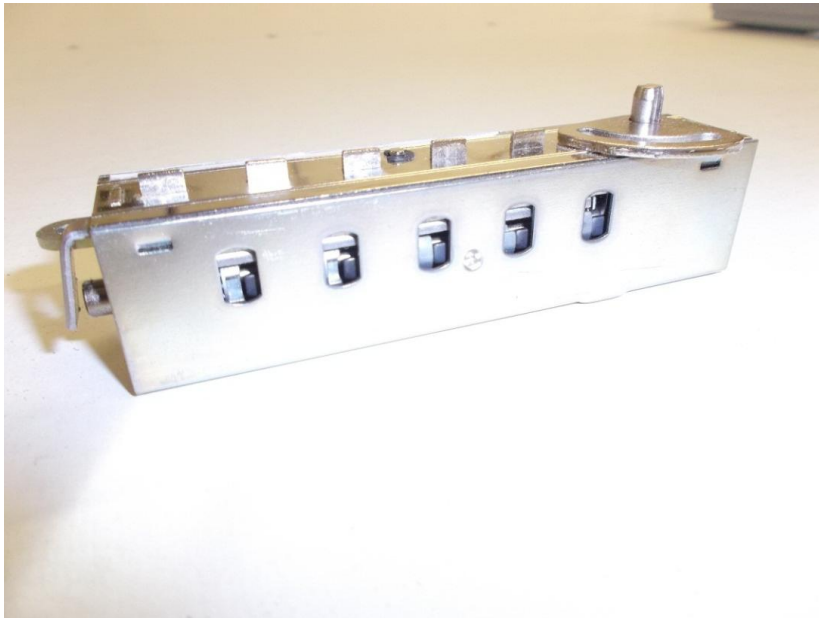
Determine which style tumbler assembly you have. If yours has holes in the side that you can look through to see the code gears, no further disassembly is necessary.

If your tumbler assembly looks like the one on the right, you will need to gently pry off the back cover using a small flat tip screwdriver.

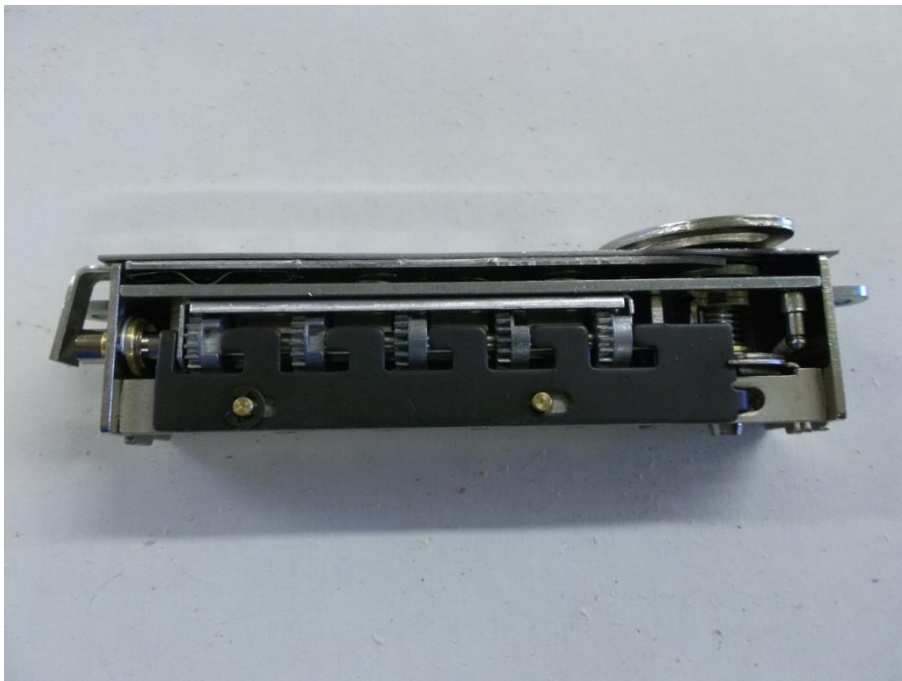




At this point you should either be looking at this:

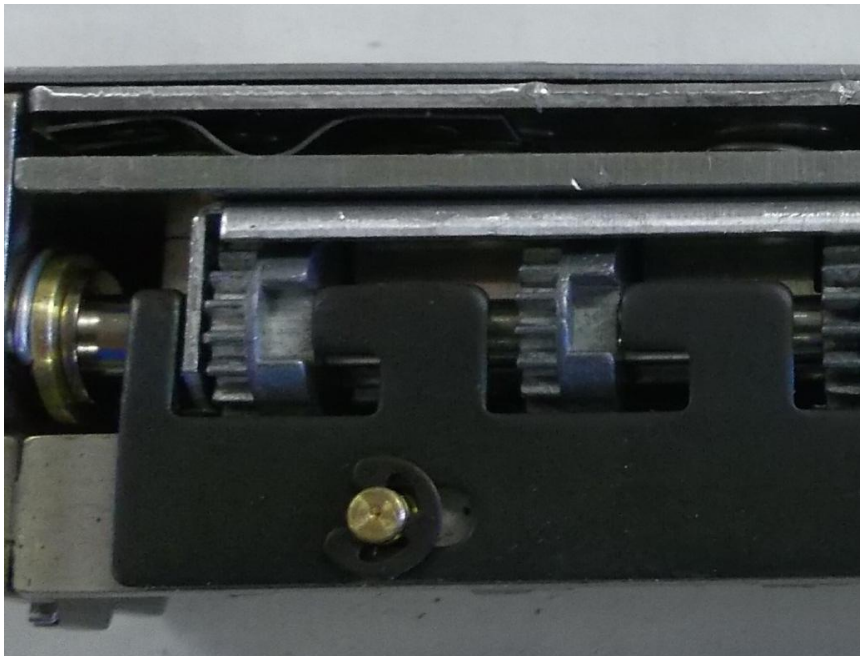


Or this:





Using the slotted plate on the top of the tumbler assembly, turn the shaft to the left (counter clockwise) to clear the lock. You can now determine what the previous combination was set to by reading the position of the code gears in relation to the black steel plate.



Code gears that have the notch lined up with the tab next to them are NOT part of the combination, these can be ignored.

Code gears that are farther away from being lined up will be first, closer will be second, if they are lined up with each other they need to be pushed at the same time. The buttons on the tumbler assembly are not in numerical order, the following picture shows how the buttons on the tumbler assembly translate to the numbered buttons on the button assembly. (This one is still set to the factory default combination.)



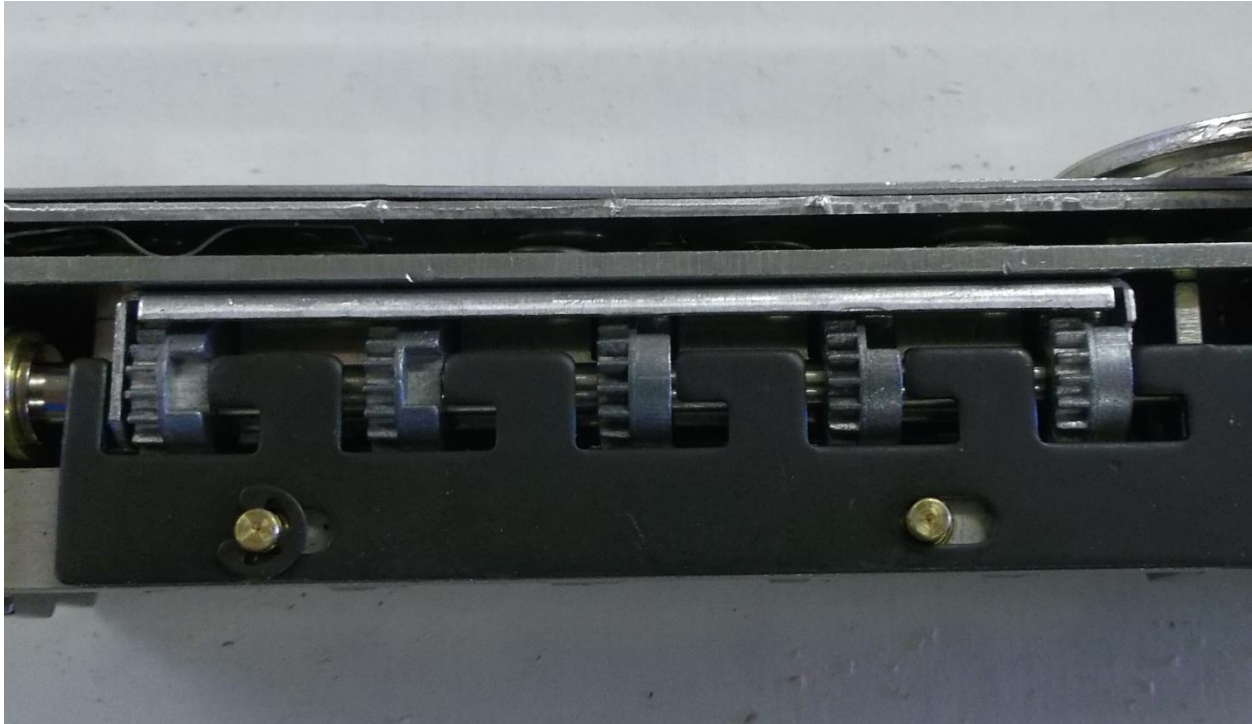
1

5

2

3

4



When you enter the combination all of the code gears should line up with the tab next to them, like the 1 and 5 do in this picture. Once you have verified the previous combination you can reassemble the lock. You can choose to use the previous combination if you like, or change it using the following instructions.

SETTING/CHANGING YOUR COMBINATION

STEP 1. Open Drawer - Remove allen screw from the left side of the lock.

STEP 2. Clear the lock - Turn outside thumb knob to the left to clear the lock.

STEP 3. Enter existing combo.

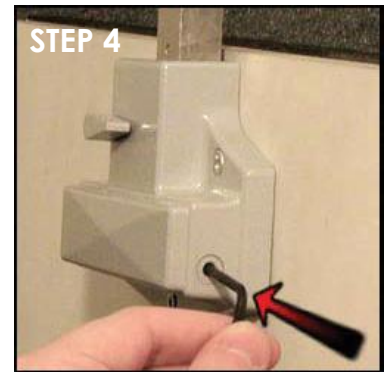
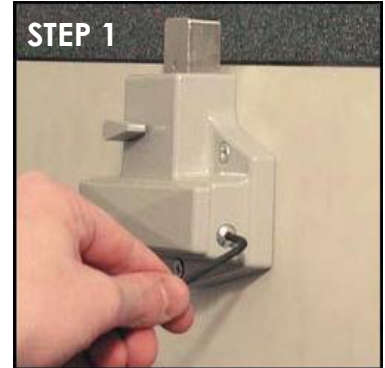
STEP 4. Insert allen wrench into the hole on the left side of the lock to depress internal lockout slide.

STEP 5. Turn thumb knob back to the left.

STEP 6. Enter new combo.

STEP 7. Turn thumb knob to the right.

STEP 8. Repeat steps 5-6.



WARRANTY INFORMATION

This product is warranted to be free from defects in material and workmanship under normal use and service for a period of one (1) year. However, this warranty does not cover problems arising out of improper installation or use. Our only liability, whether in tort or in contract, under this warranty is to repair or replace products which are returned to the factory, shipping charges prepaid to the address shown within the one (1) year warranty period.

Our warranty shall only apply if the item returned is found by analysis by factory personnel to be defective.

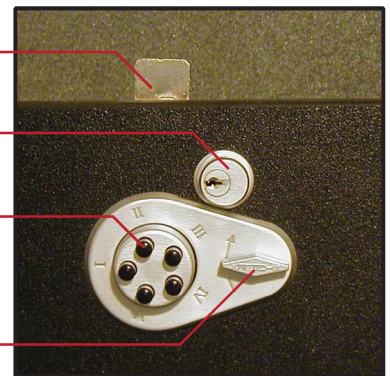
This warranty is in lieu of and not in addition to any other warranty or condition, express or implied, including without limitation merchantability, fitness for purpose or absence of latent defects.

Cam

Key Over-Ride

Buttons

Outside
Thumbturn
Knob



Troubleshooting

If the thumb knob retracts the cam and you have not entered your comb, steps were done out of order and the lock is in zero code. **Repeat steps 2-4-5-6-7&8.**